

Desoxycholate Lactose Agar



Medium used for the isolation and identification of coliforms.

*Equally use with MFDS (MB-D2355K).

• CONTENTS (Liter)

| | |
|------------------------------|--------|
| Peptone | 10.0 g |
| Lactose | 10.0 g |
| Sodium Chloride | 5.0 g |
| Sodium Citrate | 2.0 g |
| Sodium Desoxycholate | 0.5 g |
| Neutral Red | 0.03 g |
| Agar | 15.0 g |
| Final pH = 7.4 ± 0.1 at 25°C | |

• PROCEDURE

Suspend 42.53 G of powder in 1 L of distilled or deionized water. Heat to boiling for 1 minute until completely dissolved. DO NOT AUTOCLAVE. Cool to 45 - 50°C in water bath. Mix well. Pour into petri dishes.

• INTERPRETATION

Desoxycholate Lactose Agar is a medium used for the isolation and identification of coliforms. Peptone provides carbon, nitrogen, vitamins and minerals. Lactose is the fermentable carbohydrate. Sodium chloride supplies essential electrolytes for transport and maintains the osmotic balance. Sodium citrate and sodium desoxycholate inhibit the growth of Gram-positive bacteria. Neutral red is a pH indicator. Agar is the solidifying agent.

• TECHNIC

Inoculate the specimen using a sterile loop to the medium. Incubate at 36 ± 1°C for 24 ± 2 hours. Refer appropriate references for recommended test procedure.

• QUALITY CONTROL FOR USE

Dehydrated medium

Appearance: free-flowing, homogeneous

Color: pink-beige

Prepared medium

Appearance : opalescent

Color: pink-red

Incubation conditions: 36 ± 1°C / 24 ± 2 hours

| Microorganism | ATCC | Inoculum CFU | Growth | Characteristics |
|-------------------------------|-------|------------------|-----------|--|
| <i>Escherichia coli</i> | 25922 | 50-100 | good | pink colonies with bile precipitates |
| <i>Enterobacter aerogenes</i> | 13048 | 50-100 | good | pink colonies, may have slight bile precipitates |
| <i>Salmonella typhimurium</i> | 14028 | 50-100 | good | colorless colonies |
| <i>Enterococcus faecalis</i> | 29212 | ≥10 ³ | inhibited | - |

• STORE

The powder is very hygroscopic. Store the powder at room temperature, in a dry environment, in its original container tightly closed and use it before the expiry date on the label. Store prepared medium at 2 - 8°C.

• REFERENCES

1. Leifson, E. 1935. New culture media based on sodium desoxycholate for the isolation of intestinal pathogens and for the enumeration of colon bacilli in milk and water. *J. Pathol. Bacteriol.* 40: 581-599.
2. Refer to the MFDS.

• PACKAGE

| | |
|--|-------|
| Cat. No : MB-D2355 Desoxycholate Lactose Agar | 500 G |
|--|-------|

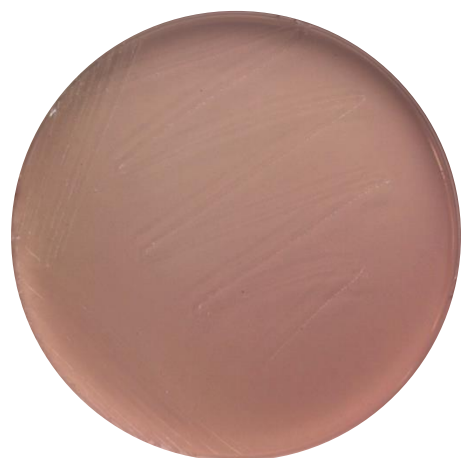
• MICROBIAL CULTURE IMAGES



None



Escherichia coli ATCC 25922



Enterococcus Faecalis ATCC 29212

Incubation conditions : $36 \pm 1^{\circ}\text{C}$ / 24 ± 2 hours